



FREE eBook

LEARNING

etl

Free unaffiliated eBook created from
Stack Overflow contributors.

#etl

Table of Contents

About.....	1
Chapter 1: Getting started with etl.....	2
Remarks.....	2
Examples.....	2
Installation or Setup.....	2
Chapter 2: Installing Pentaho Data Integration (Kettle) PDI version 7 on local machine.....	3
Introduction.....	3
Remarks.....	3
Examples.....	3
STEP BY STEP INSTALLATION.....	3
Credits.....	6

About

You can share this PDF with anyone you feel could benefit from it, downloaded the latest version from: [etl](#)

It is an unofficial and free etl ebook created for educational purposes. All the content is extracted from [Stack Overflow Documentation](#), which is written by many hardworking individuals at Stack Overflow. It is neither affiliated with Stack Overflow nor official etl.

The content is released under Creative Commons BY-SA, and the list of contributors to each chapter are provided in the credits section at the end of this book. Images may be copyright of their respective owners unless otherwise specified. All trademarks and registered trademarks are the property of their respective company owners.

Use the content presented in this book at your own risk; it is not guaranteed to be correct nor accurate, please send your feedback and corrections to info@zzzprojects.com

Chapter 1: Getting started with etl

Remarks

This section provides an overview of what etl is, and why a developer might want to use it.

It should also mention any large subjects within etl, and link out to the related topics. Since the Documentation for etl is new, you may need to create initial versions of those related topics.

Examples

Installation or Setup

Detailed instructions on getting etl set up or installed.

Read [Getting started with etl online](https://riptutorial.com/etl/topic/9294/getting-started-with-etl): <https://riptutorial.com/etl/topic/9294/getting-started-with-etl>

Chapter 2: Installing Pentaho Data Integration (Kettle) PDI version 7 on local machine

Introduction

It will focus on Installing Pentaho Kettle - GUI Spoon on Local machine both Windows and Ubuntu machine.

Remarks

Spoon is a very effective ETL Tool from the basket of Pentaho. it is easy to install and it can change the way the Data Loading and data Cleaning is done in any organisation. it is faster and works well with huge data.

Examples

STEP BY STEP INSTALLATION

Working with Kettle There are two versions of Kettle aka Pentaho Data Integration :

1. Kettle CE (Community Edition)
2. Kettle EE (Enterprise Edition)

Documents aims mainly on Kettle CE edition.

Prerequisites

PDI requires the Oracle Java Runtime Environment (JRE) version 7. You can obtain a JRE for free from Oracle.

Java 8 for PDI 6 and above

Java 7 for older versions

Make sure the java path is set in the environmental variable under Control panel before you run the spoon.bat file.

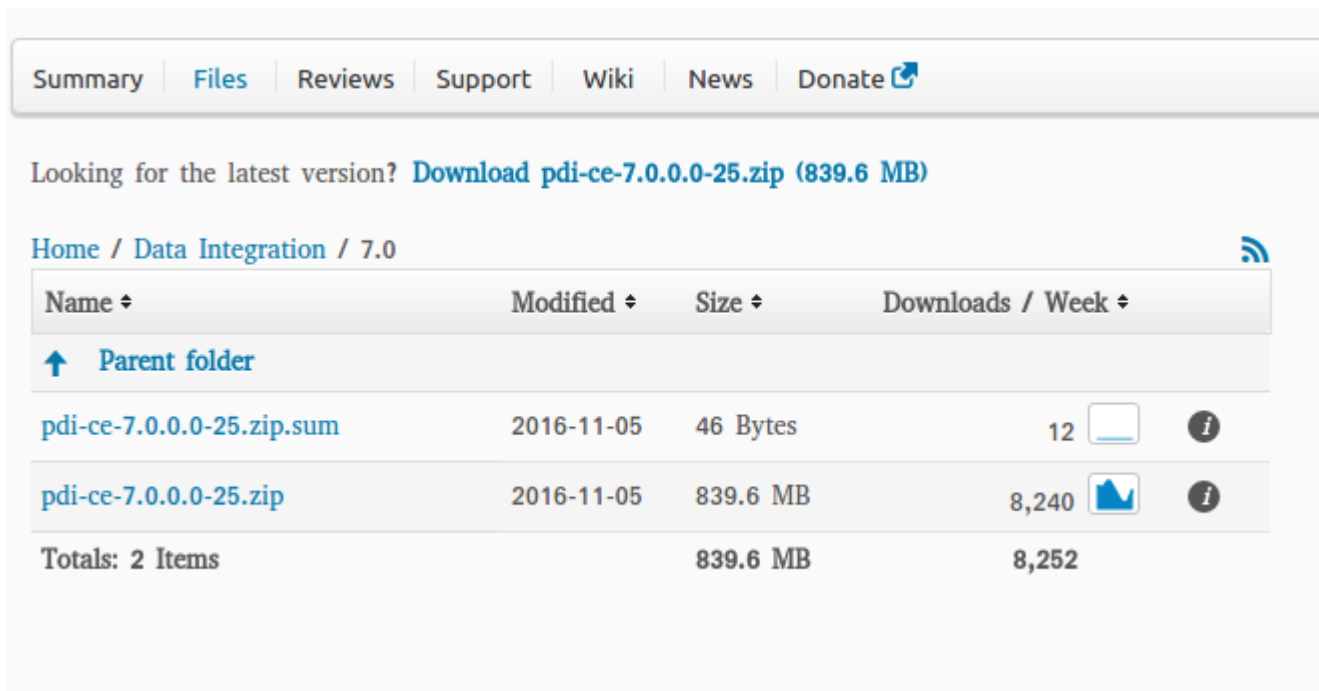
Download PDI

You can download Pentaho Data Integration **Community Edition** from Sourceforge.net.

Link : <https://sourceforge.net/projects/pentaho/files/Data%20Integration/>

For the **Enterprise Edition**, please use the Customer Support Portal, or go to

Link : <http://www.pentaho.com/download/> for an Evaluation copy.



Above image is of sourceforge site

Once you open the Link : Install pdi-ce-7.0.0.0-25.zip (Latest as of now)

Windows OS : The installation of 801 MB will began.once the installation is done

1. Extract the zip file from the download
2. you will find the folder called "data integration"
3. Navigate to the spoon.bat file and run spoon.bat file to start the Spoon GUI *Make sure the java path is set properly

Ubuntu/Linux OS

On Unix-like operating systems, you may need to make the shell scripts executable by using the chmod command:

navigate to the folder in the terminal

```
cd data-integration
```

```
chmod +x .sh
```

then just run the spoon.sh file

```
./spoon.sh
```

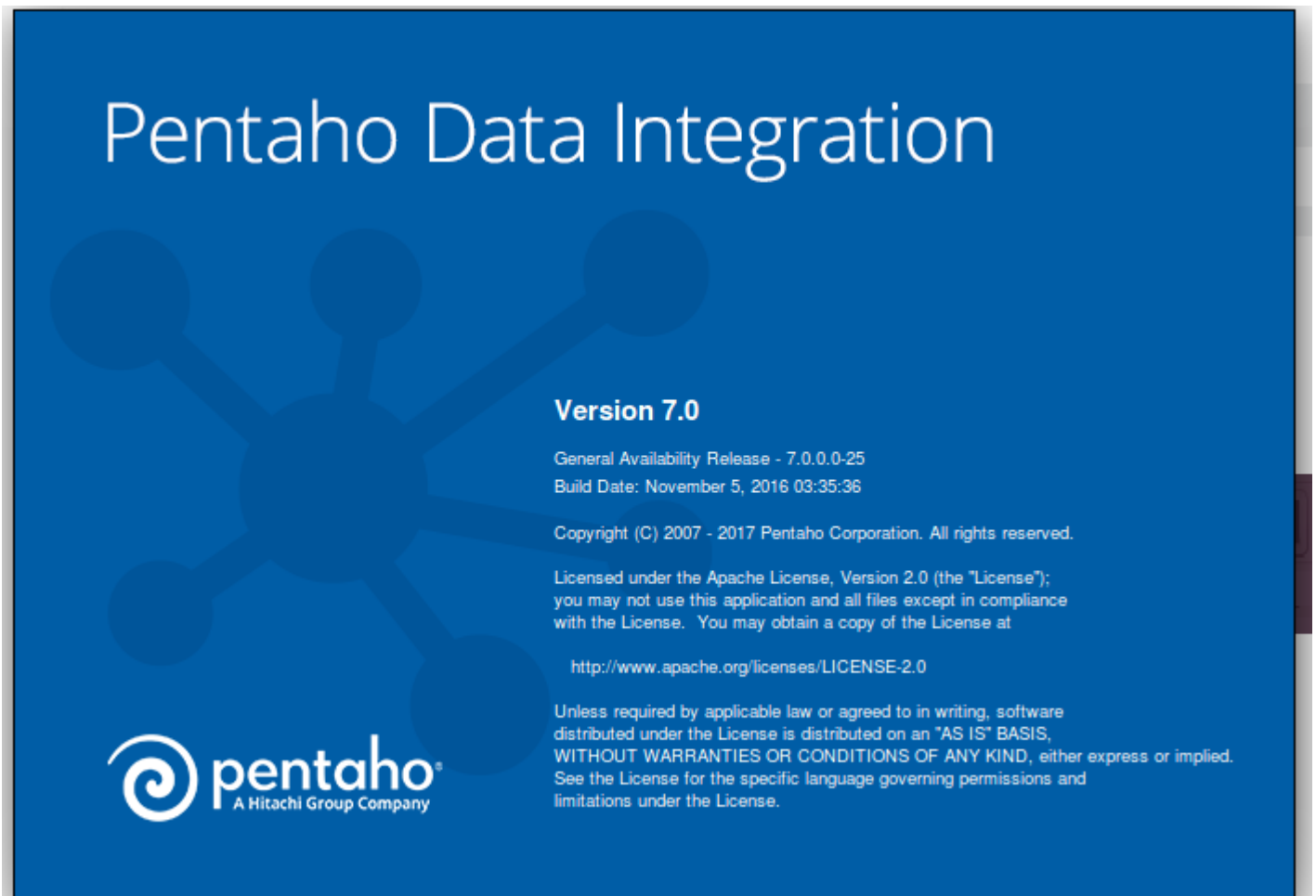
*Make sure the java path is set properly

Checking Java Path is set or not

go to terminal

```
echo $JAVA_HOME
```

the path returned by echo \$JAVA_HOME is the java path If the above command is not returning the path check for java path again. Set java path and try again.



That's all about installing Spoon on Local Machine.

Read Installing Pentaho Data Integration (Kettle) PDI version 7 on local machine online:
<https://riptutorial.com/etl/topic/9979/installing-pentaho-data-integration--kettle--pdi-version-7-on-local-machine>

Credits

S. No	Chapters	Contributors
1	Getting started with etl	Community
2	Installing Pentaho Data Integration (Kettle) PDI version 7 on local machine	JasmineKaur Bakshi